

# Neurology for the PCP

FRIDAY, OCT. 28 • DETROIT MARRIOTT TROY

## DESCRIPTION

This conference is geared toward primary care partners. The key objectives are to help physicians and other clinicians identify neurological symptoms and treatment options.

## TARGET AUDIENCE

- Physicians
- Physician assistants
- Nurses
- Nurse practitioners
- Physical and occupational therapists
- Allied health
- Residents, fellows and medical students in the specialties of family medicine, internal medicine and pediatrics.

## OBJECTIVES

At the conclusion of this activity, learners should be better able to:

- Identify signs and symptoms associated with specific neurologic disorders
- Explain treatment options for patients with neurological symptoms
- Instruct participants on guidelines for patient referral
- Describe follow-up recommendations to reduce readmissions

## FACULTY DISCLOSURE

All speakers and members of the planning committee have been asked to disclose any relevant relationships they may have with commercial interests. The presence or absence of relationships will be disclosed at the time of the meeting.

## ACCREDITATION STATEMENT (CME accreditation)

This activity is approved for AMA PRA Category 1 Credits™, AOA Category 1 A credits and ANCC Nursing Contact Hours.

For more information, including specific CME credit information, visit [beaumont.cloud-cme.com/neuropcp2022](http://beaumont.cloud-cme.com/neuropcp2022).

NON-PROFIT ORG  
U.S. POSTAGE  
PAID  
PERMIT NO 404  
ROYAL OAK  
MICHIGAN

**Beaumont**

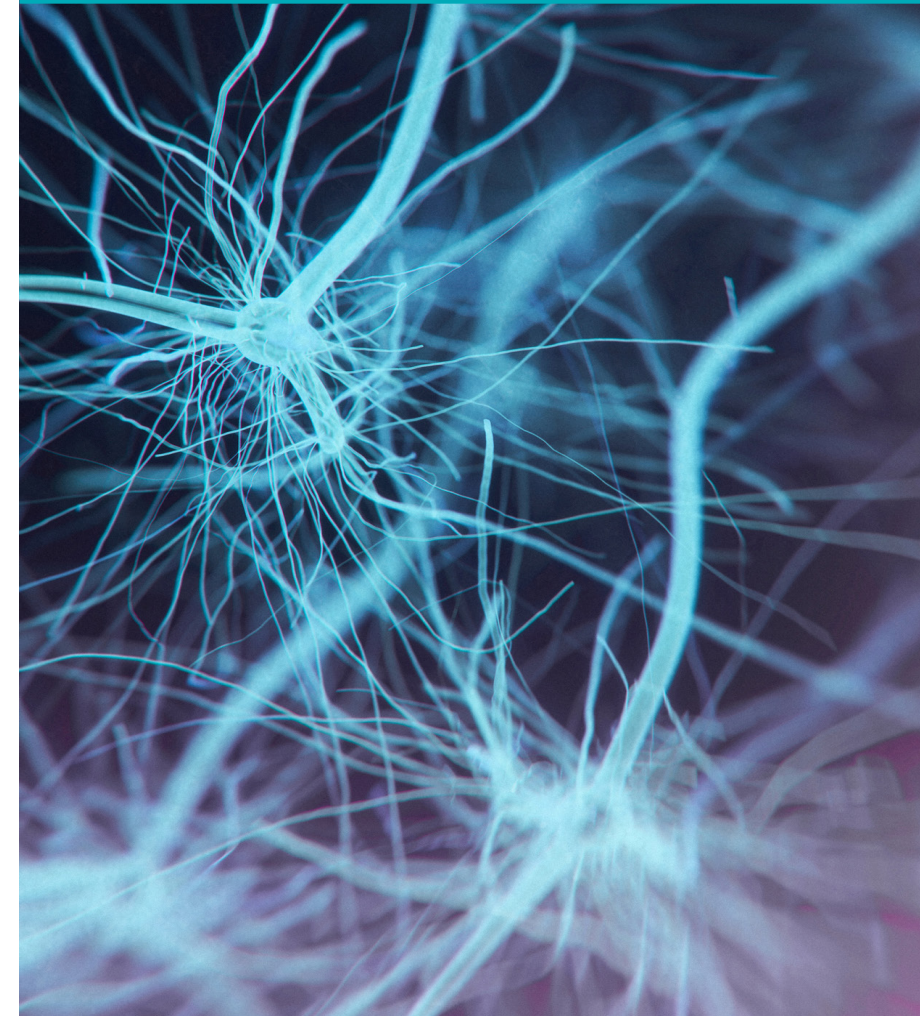
Neuroscience Center  
3555 West 13 Mile Road, Suite N120  
Royal Oak, MI 48073

**Neurology  
for the PCP**

**FRIDAY, OCT. 28, 2022**

**Detroit Marriott Troy • Troy, MI**

P629e1\_25091\_000022



# Neurology for the PCP

*(Primary Care Partners)*

Care and management of the neurology patient  
for primary care and pediatric physicians.

**FRIDAY, OCT. 28, 2022**  
**Detroit Marriott Troy • Troy, MI**

**Beaumont**

## FACULTY AND PLANNING COMMITTEE\*

**\*Activity Director, Daniel Menkes, M.D.**  
Neurology Health System Chair  
Beaumont Hospital, Royal Oak, MI  
Professor, OUWB School of Medicine

**Anna Aljassem, M.D.**  
Physical Medicine and Rehabilitation  
Beaumont Hospital, Royal Oak, MI  
Assistant Professor, PM&R  
OUWB School of Medicine

**Lauren Aymen, D.O.**  
Neurology  
Beaumont Hospital, Royal Oak, MI  
Instructor, Neurology  
OUWB School of Medicine

**Jonathan Fellows, D.O.**  
Neurology  
Beaumont Hospital, Royal Oak, MI  
Assistant Professor, Neurology  
OUWB School of Medicine

**Rebecca Grysiwicz, D.O.**  
Neurology  
Beaumont Hospital, Royal Oak, MI  
Assistant Professor, Neurology  
OUWB School of Medicine

**Meghan Harper-Shankie, M.D.**  
Pediatrics  
Beaumont Hospital, Royal Oak, MI  
Instructor, Pediatrics  
OUWB School of Medicine

**Ayman Haykal, M.D.**  
Neurology  
Beaumont Hospital, Royal Oak, MI

**Muhib Khan, M.D.**  
Neurology  
Spectrum Health Medical Group  
Vascular Stroke Specialist

**Suleiman Kojan, M.D.**  
Neurology  
Beaumont Hospital, Royal Oak, MI  
Associate Professor, Neurology  
OUWB School of Medicine

**Adam Kuhlman, D.O.**  
Neurology  
Beaumont Hospital, Royal Oak, MI  
Assistant Professor, Neurology  
OUWB School of Medicine

**Elizabeth Leleszi, M.D.**  
Pediatrics  
Beaumont Hospital, Royal Oak, MI  
Assistant Professor, Neurology  
OUWB School of Medicine

**\*Anne Marie Michon, NP**  
Pediatrics  
Beaumont Hospital, Royal Oak, MI

**Susan Musto, NP**  
Concussion Clinic  
Beaumont Hospital, Royal Oak MI

**Meera Patel, M.D.**  
Pediatrics  
Beaumont Hospital, Royal Oak, MI

**\*Lori Sheridan, BBA**  
Neuroscience Outreach Coordinator  
Beaumont Hospital, Royal Oak, MI

## AGENDA

7:30–7:35 a.m.	<b>WELCOME</b>   Daniel Menkes, M.D.
7:35–8:35 a.m.	<b>Stroke Management for the PCP</b> <i>Keynote Address:</i> Muhib Khan, M.D., Vascular Stroke Specialist Spectrum Health Medical Group
8:35–9:05 a.m.	<b>Stroke Discussion with Q &amp; A</b>   Rebecca Grysiwicz, D.O.
9:05–10 a.m.	<b>Adult Dementia</b>   Jonathan Fellows, D.O.
10–10:20 a.m.	<b>BREAK</b>
10:20–10:55 a.m.	<b>Coordination of Care in the Pediatric Neuromuscular Patient</b> Meghan Harper-Shankie, M.D.
10:55–11:30 a.m.	<b>Adult Neuromuscular</b>   Daniel Menkes, M.D.
11:30 a.m. to 12:05 p.m.	<b>Neuropathic Pain Management</b>   Annas Aljassem, M.D.
12:05–1 p.m.	<b>LUNCH</b>
1–1:30 p.m.	<b>Concussion Management - return to work, learn and play</b> Susan Musto, NP
1:30–2 p.m.	<b>Overview of Sleep Problems in Adults and Children</b> Meera Patel, M.D.
2–2:45 p.m.	<b>Headache Management for the PCP</b>   Lauren Aymen, D.O.
2:45–3 p.m.	<b>Panel Discussion with session speakers</b>   Moderator: Elizabeth Leleszi, M.D.
3–3:20 p.m.	<b>BREAK</b>
3:20–3:50 p.m.	<b>Primary Care Management of Seizures</b> M. Ayman Haykal, M.D.
3:50–4:20 p.m.	<b>Movement Disorders</b>   Adam Kuhlman, D.O.
4:20–4:50 p.m.	<b>Multiple Sclerosis – identification and treatment options</b> Suleiman Kojan, M.D.
4:50–5 p.m.	<b>CLOSING REMARKS</b>   Daniel Menkes, M.D.

The agenda and number of credits available are subject to change.

# Neurology for the PCP

FRIDAY, OCT. 28 • DETROIT MARRIOTT TROY

## REGISTRATION LINK

[beaumont.cloud-cme.com/neuropcp2022](https://beaumont.cloud-cme.com/neuropcp2022)

## REGISTRATION FEES

	Early Bird Rate On or before 9/30/22	Regular Rate Between 10/1/22 and 10/25/22	Onsite Rate 10/28/22
Beaumont Physician	<b>\$125</b>	\$150	\$170
Non-Beaumont Physician	<b>\$150</b>	\$175	\$195
Nurse Practitioner (NP), Physician Assistant (PA), Resident and Fellow	<b>\$100</b>	\$125	\$145
Nurse and Allied Health	<b>\$75</b>	\$100	\$120
Non-OUWB Medical Student	<b>\$35</b>	\$45	\$65
OUWB Medical Student	<b>\$25</b>	\$35	\$55

Cancellations or refund requests must be received by Oct. 25, 2022. A processing fee of \$30 will be assessed to all canceled registrations. Cancellation and refund requests after Oct. 25 will not be honored. To cancel a registration, please send an email to [cme@beaumont.edu](mailto:cme@beaumont.edu) with "Cancellation" in the subject line.

## QUESTIONS

**CME related questions:** contact [cme@beaumont.edu](mailto:cme@beaumont.edu)

**Event related questions:** contact Lori Sheridan at 248-551-2309  
or [lori.sheridan@beaumont.org](mailto:lori.sheridan@beaumont.org)

**Registration questions:** contact Becky Kirk at [rebecca.kirk@beaumont.org](mailto:rebecca.kirk@beaumont.org)

Beaumont is committed to making its activities accessible to all individuals. If you are in need of a special accommodation, please do not hesitate to contact us.

**Beaumont**